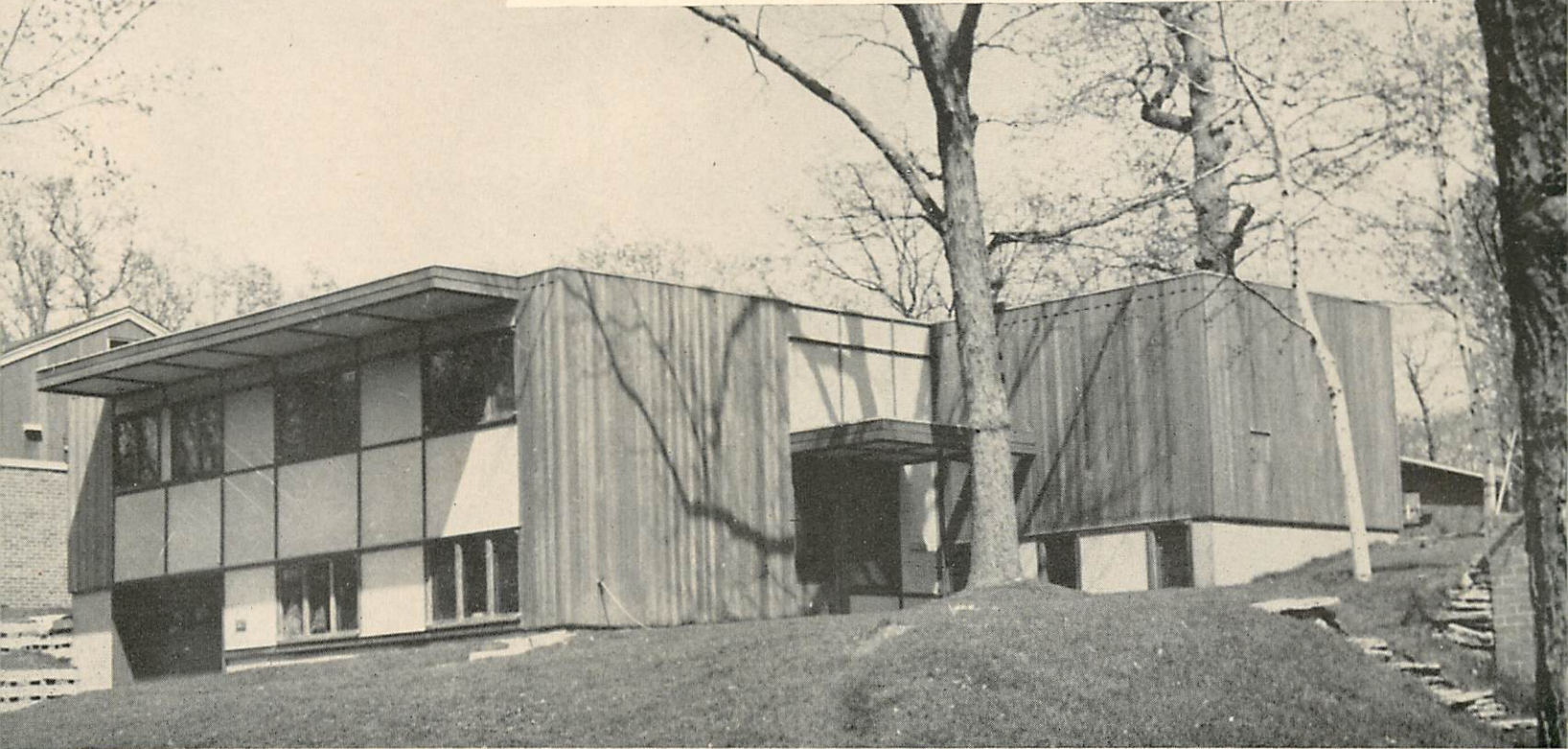


# A Beautiful New Casement Window ..... by Rydell



Residence for Mr. and Mrs. P. M. Raup  
1572 Fulham Street, St. Paul, Minn.

Elizabeth and Winston Close  
Architects

Everything you've come to expect from *Rydell's* in advanced design has been incorporated into this outstanding window, coupled with the fine craftsmanship which is traditionally *Rydell's*. Yet it is competitively priced.

#### Compare these features:

- All wood construction
- Made of Redwood or Pine (or other woods on order)
- Thermopane glazed—only two surfaces to wash
- Sash is  $2\frac{3}{8}$ " thick—but narrow in elevation
- Thin mullion section
- Beautiful natural bronze hardware—not a paint
- Extension hinges for inside cleaning
- Bronze weatherstripping
- Aluminum screens available
- Toxic treated for preservation
- Fixed Thermopanes line up perfectly with operating sash

#### INSTALLATION ADVANTAGES

- Crank housing mounted entirely on frame—no moving screws on the job
- Frame is full wall thickness—no liners needed
- Available for sheetrock wall thickness at no extra cost
- Stops are factory-applied—no cutting and fitting on the job
- Casing can be applied to all four sides, or stool and apron can be used

Remember, when you specify these casements, the facilities of *Rydell's* drafting department are at your disposal in adapting this standard product to any special requirements such as the continuous casing extensions in the home above.

*This window is on display at our offices. We welcome your visit.  
Or a call or letter will bring complete information.*

2328 N. 2nd Street

**A. T. RYDELL, Inc.**  
"Woodwork of Distinction"

Minneapolis 11, Minnesota

• CHerry 3311 •